

Minutes: ASME Research & Technology Committee on Water and Steam in Thermal Systems

NIST, Gaithersburg, MD, March 31, 2015

R. Light, committee chairperson opened the meeting.

The minutes of the fall 2014 meeting were accepted.

They have been posted on the website and also emailed to all committee members and cc list.

A. Banweg presented committee financial data, currently, balances as of 2/28/15 are \$58,462.70 for the Main Committee and \$71,291.39 for the Properties Subcommittee.

C. Layman reported that the Water Technology subcommittee has been working on the new “brown book”. The Tube Sampling Document is available on the ASME website. The Precommissioning Document is undergoing final review before going out for ballot. The ASME sessions at IWC will be on 1.) Produced Water and 2.) Boiler chemistry topics.

D. Bloom reported that the Produced Water Task Group is working on an analytical methods document for their unique water applications.

A. Harvey reported that the Properties subcommittee are working on the DLL add in for the new Steam Tables in Excel. The IAPWS meeting is to be held in Stockholm in June 2015. Alan also noted that NIST may start to charge a per person fee (\$20) for meetings at NIST.

M. Tinkleman presented information on the “One ASME” reorganization, brochure attached.

D. Daniels presented some suggestions for new projects, including 1.) An equipment inspection guide, 2.) Steam purity, 3.) Operator training (water chemistry), 4.) Cooling water, including close loops and stator cooling and 5.) Boiler water treatment options rationale.

The fall meeting of the committee will be held at the International Water Conference, November 15 to 19, 2015, in Orlando, FL.

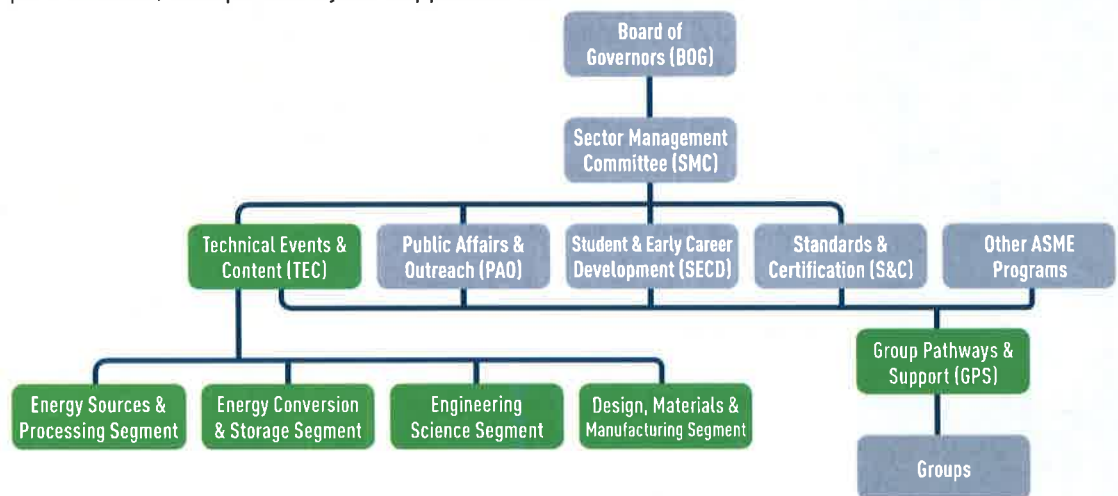
At a Glance

The “ONE ASME” initiative is an effort to align all of ASME to be more market-focused on a global level and positioned for continued success and growth in the 21st century. A key component of this effort is the reorganization of two ASME Sectors.

Organizational Structure

In an effort to better meet the professional needs of ASME members and evolving demands on the engineering profession worldwide, a board-appointed group of volunteer leaders recommended that the K&C and Institutes sectors be replaced by a new organizational structure for ASME that will enable the organization to address current and future objectives. The Board approved this recommendation as it aligns with ASME’s strategic function.

We’re pleased to introduce our new Technical Events & Content (TEC) Sector and our new support function, Group Pathways & Support (GPS).



The names and leadership of Sections, Divisions, Institutes or Affinity Groups are exactly the same. What’s different and better is a new, more streamlined process with which groups and individuals can now engage with all of ASME’s offerings.

ASME Technical Events & Content (TEC) Sector

The TEC has two primary functions. First, it oversees and has budget responsibility for:

- Technical Conferences
- Events
- Webinars
- Expos
- Speakers

Second, the TEC will help ASME understand and meet the needs of key strategic markets and customers.

The TEC Sector is:

- Organized by four initial market segments; more will be added
- Headed up by a TEC Sector Council responsible for focusing financial and volunteer resources to provide the most impact for our participants
- Made up of Segment Leadership Teams (SLTs), comprised of Subject Matter Experts (SMEs) from academia, government and industry with extensive consumer and technical knowledge; their responsibility is to help ensure that ASME conferences are relevant, up-to-date and valuable



ASME Group Pathways & Support (GPS) System

GPS is a new staff function that is designed to serve as a clearinghouse, by educating and guiding members about opportunities to engage while providing assistance for new or unfamiliar processes in all sectors, including:

Public Affairs & Outreach (PA&O)

Student & Early Career Development (SECD)

Other ASME Products and Programs

Standards & Certification (S&C)

Technical Events and Content (TEC)



Roles & Responsibilities

Segments are responsible for:

- Developing and maintaining conference strategies
- Ensuring that conferences are financially feasible, meet high quality standards and address the needs of attendees

Conference & Event Chairs

Volunteer Conference and Event Chairpersons and their committees are responsible for developing the technical program content including:

- Oversight and management of technical content development
- Conducting the peer review process
- Selecting papers for publication and presentation
- Organizing and coordinating technical sessions
- Planning special activities
- Reviewing and ensuring the quality of the technical presentations and publications delivered at the event

Each Segment will have professional staff who work in collaboration with the volunteer leaders. These include:

- A lead development director, who will work with Segment leaders to look at customer needs and help develop a portfolio of products and programs
- A lead conference manager, who will work with conference program leaders, and will oversee conference logistics
- Other support staff

ASME Staff responsibilities include:

- Development of logistics and business plans
- Budgeting
- Event scheduling
- Site selection
- Soliciting bids and contracting vendors
- On-site arrangements
- Completion of necessary legal agreements
- Marketing plans and documents
- Establishing registration fees
- Order processing and authorization of payments
- Customer service
- Event execution
- Consolidation of all financial results

More details on the reorganization and what it means specifically for your group can be found at: asme.org

